

CIRCULAR BREAKING SAW

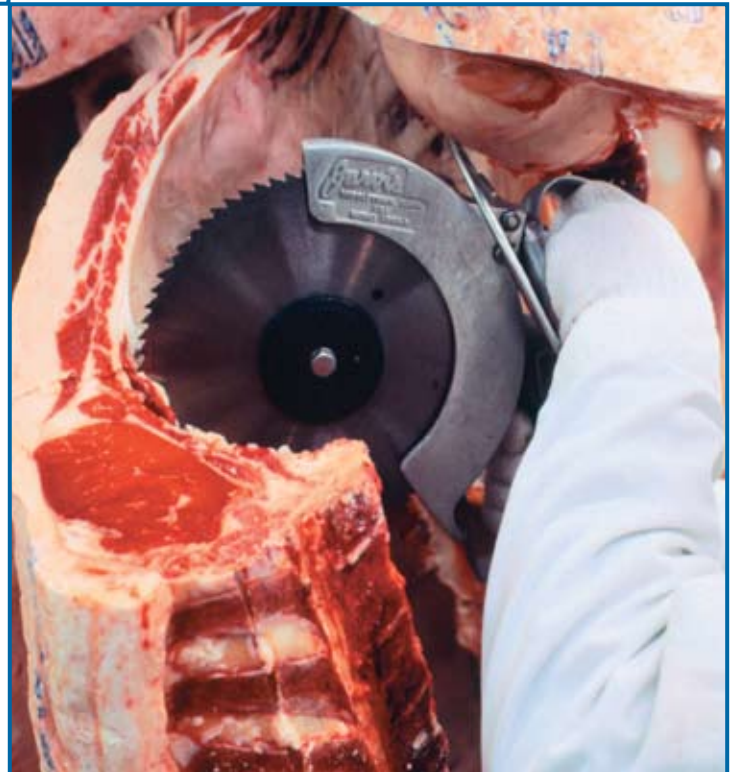
Model 1000F



The Jarvis Model 1000F - pneumatically powered breaking saw.

JARVIS

- The 1000F with a 3 in (76 mm) depth of cut, is ideally suited for:
 - Beef: chucks, shoulders, ribs, forequarters, chine bones, briskets, loins and aitch bones.
- Large depth of cut, yet lightweight and flexible - reduces operator fatigue.
- Constructed from corrosion resistant materials for optimum hygiene.
- Meets national and international requirements for safety and hygiene.



THE 1000F - POWERFUL, LIGHTWEIGHT, FLEXIBLE

CIRCULAR BREAKING SAW

Model 1000F

Specifications		
Drive		Pneumatic
Model 1000F		
Motor Power	1.0 hp	746 W
Operating Pressure	120 psi	8.3 bar
Air Consumption	38 ft ³ / min	17.9 L / sec
Blade Speed @ 120 psi		1600 rpm
Control Handle	Single Trigger	Pneumatic
Blade Diameter	9.0 in	229 mm
Cutting Depth (Maximum)	3.0 in	76 mm
Overall Length	16 in	406 mm
Weight	12.7 lbs	5.8 kg
Vibration	less than (<) 115 dB	<0.56 m/sec ²
Noise		95 dB
Equipment Selection and Accessories		Order Number
Model 1000F		4001012
Air Hose		
Straight	length 16 ft / 5 m	1059015
Coiled	length 25 ft / 7.6 m	1059071
Air Filter / Regulator / Lubricator		3022003
Balancer		4042040
Blade	9.0 in / 229 mm diameter - 130 teeth	1023010



Products for the meat and poultry industry

Jarvis Products Corporation · 33 Anderson Road · Middletown, CT 06457-4926 · United States of America
 Telephone (860) 347-7271 · Fax (860) 347-9905 · sales@jarvisproducts.com · www.jarvisproducts.com